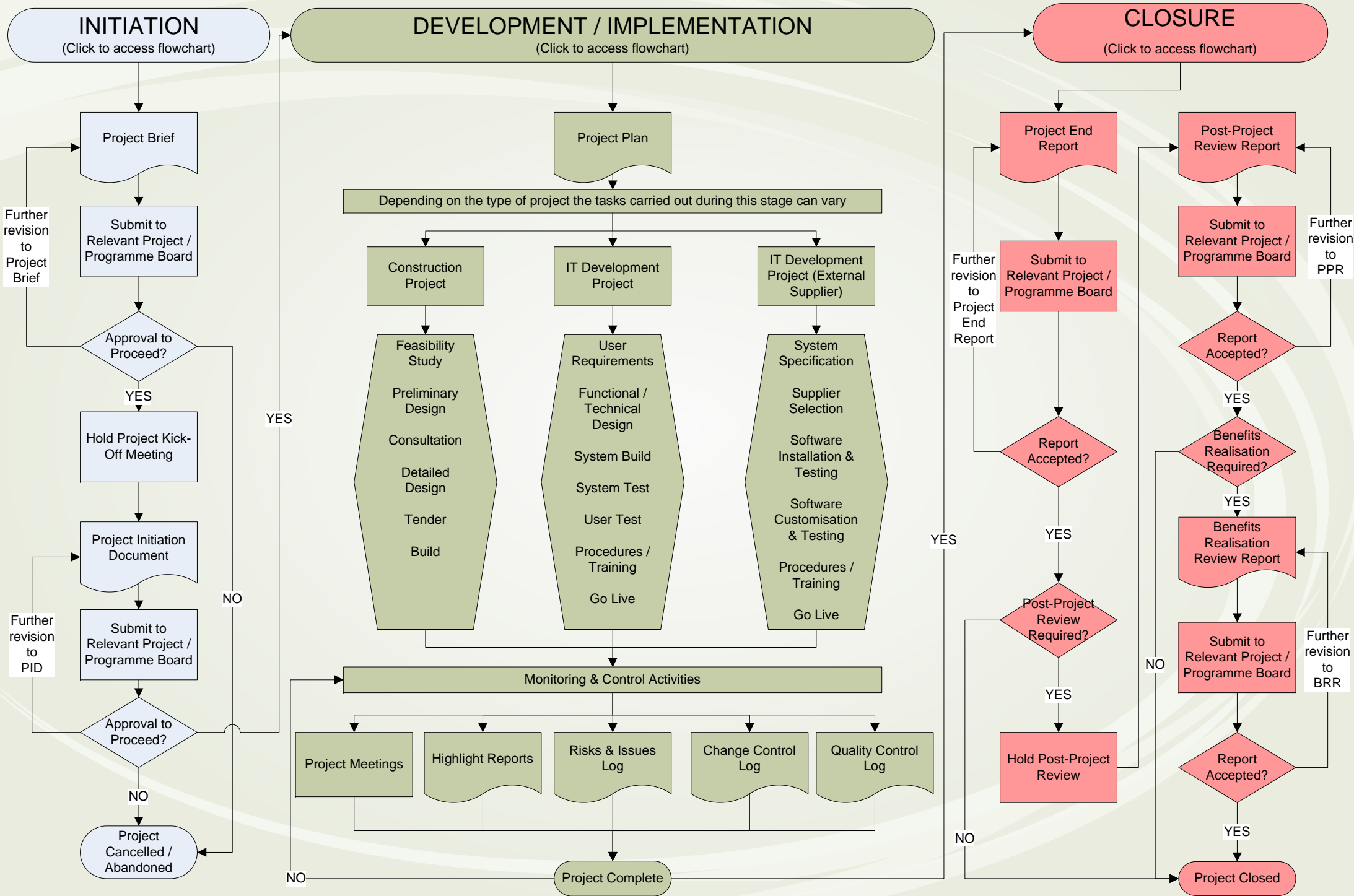
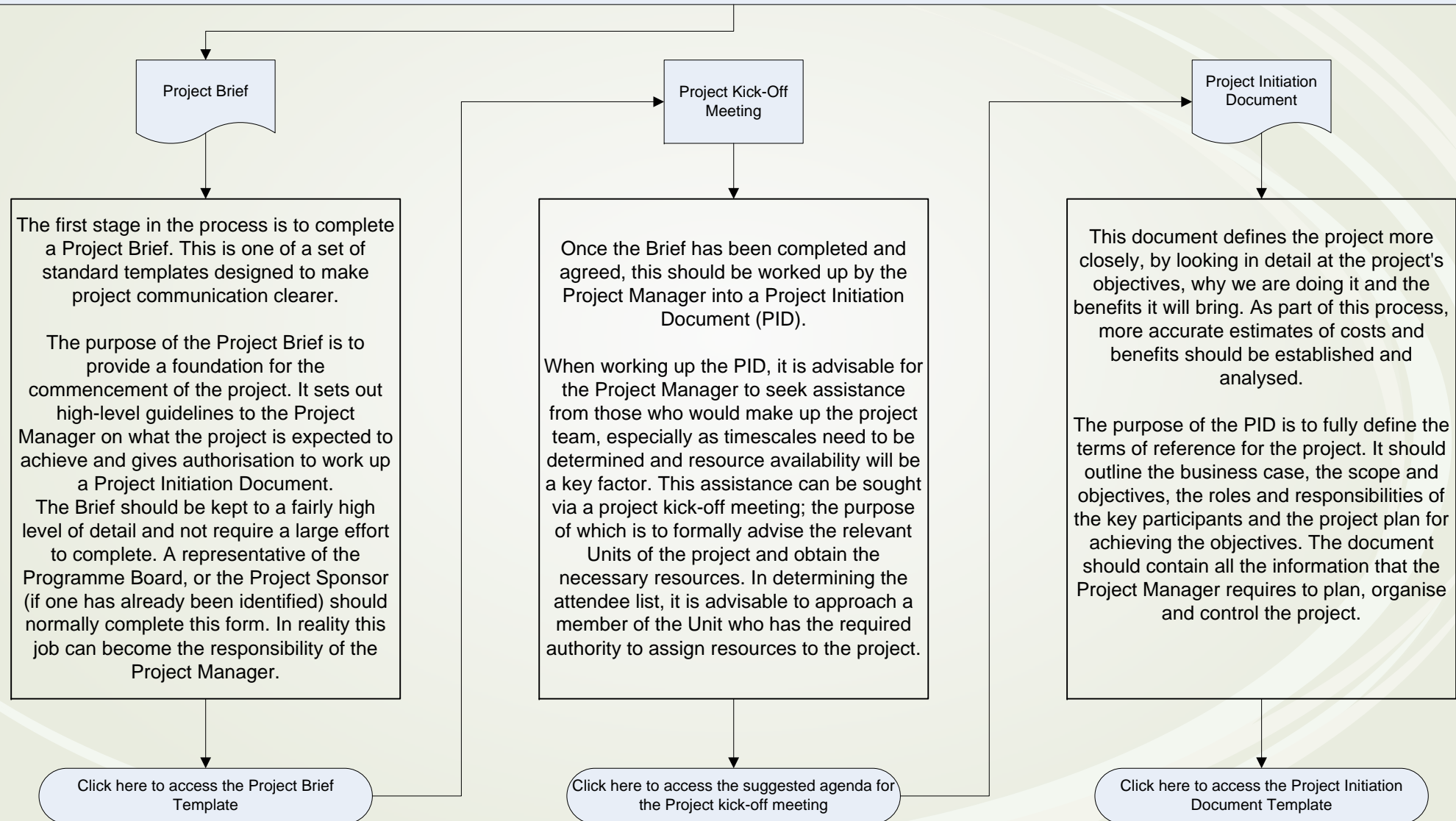


Eastleigh Borough Council Project Management Process



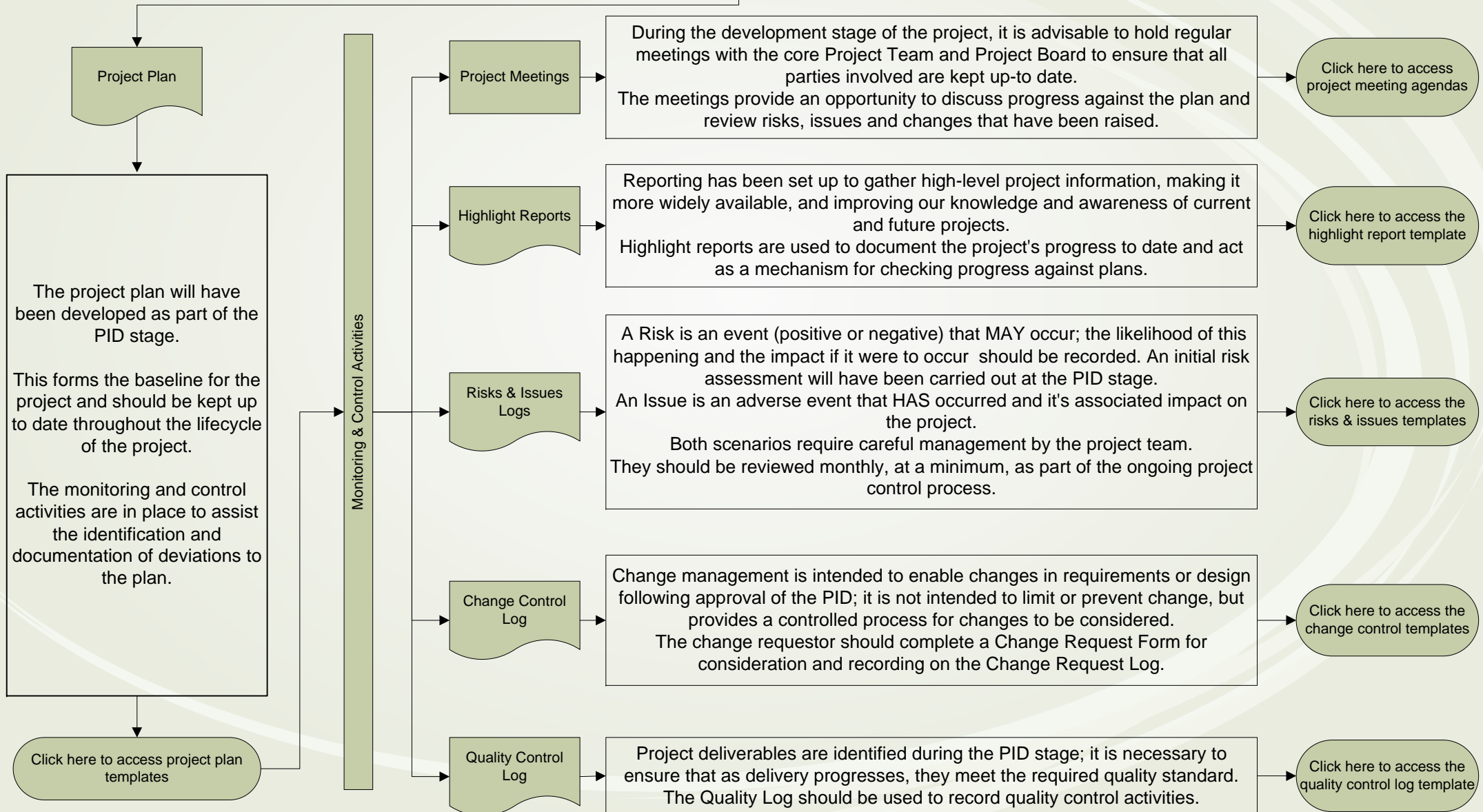
INITIATION

This stage of the project starts from initial discussions and production of the Project Brief, and continues to the approval of the Project Initiation Document (PID) and Project Plan.



DEVELOPMENT / IMPLEMENTATION

This stage includes all the work required once the PID has been approved to the actual handover, launch, "go live" or opening of the finished product, system or service.



CLOSURE

Once the product, service or system is available, actions should be taken to signify that the project is complete and the project team can stand down.

